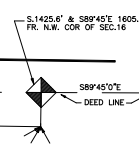
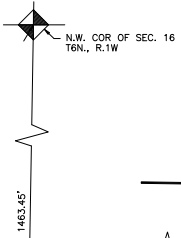
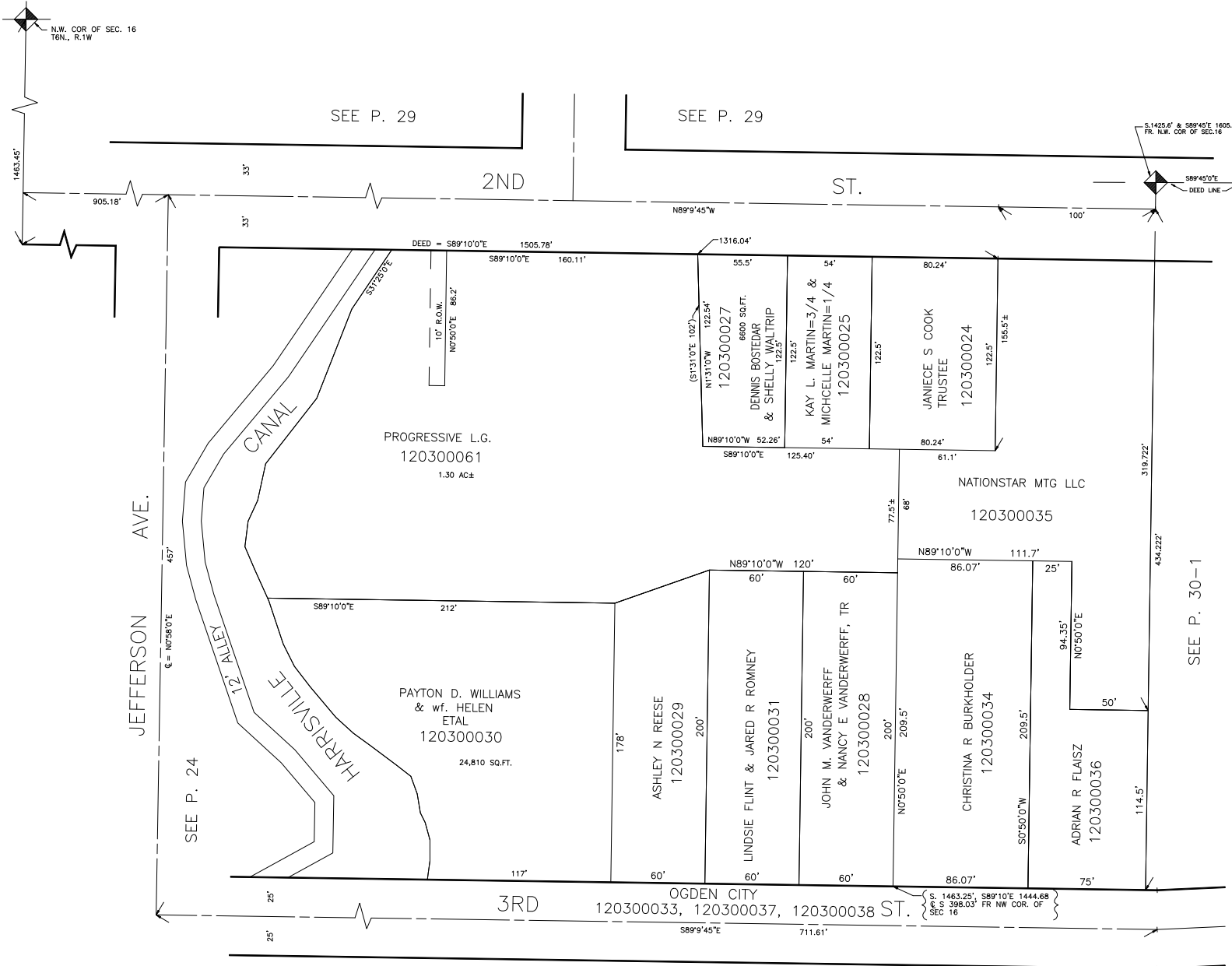


PART OF THE N.W. 1/4 OF SECTION 16, T.6N.,R.1W., S.L.B.&M

IN OGDEN CITY
SCALE 1" = 50'

TAXING UNIT: 25



SEE P. 30

SEE P. 30-1

SEE P. 29

SEE P. 29

SEE P. 24

JEFFERSON AVE.

2ND ST.

3RD ST.

HARRISVILLE CANAL
12 1/2 ALLEY

PROGRESSIVE L.G.
120300061
1.30 AC±

PAYTON D. WILLIAMS
& wf. HELEN
ETAL
120300030
24,810 SQ.FT.

ASHLEY N REESE
120300029

LINDSIE FLINT & JARED R ROMNEY
120300031

JOHN M. VANDERWERFF
& NANCY E. VANDERWERFF, TR
120300028

CHRISTINA R BURKHOLDER
120300034

ADRIAN R FLAISZ
120300036

120300027
DENNIS BOSTEDAR
& SHELLY WALTRIP

120300025
KAY L. MARTIN=3/4 &
MICHELLE MARTIN=1/4

120300024
JANIECE S COOK
TRUSTEE

120300035
NATIONSTAR MTG LLC

OGDEN CITY
120300033, 120300037, 120300038 ST.

S. 1463.25', S89°10'E 1444.68'
FR NW COR. OF SEC 16